

4

3

2

1

NOTICE OF PROPRIETARY RIGHTS

This document contains confidential technical data, including trade secrets and proprietary information which are the property of VORTAB Company and are protected by United States patents numbers 4,929,088 and 4,981,368. Disclosure of this data to you is expressly conditioned upon your assent that its use is limited to use within your company only (and does not include manufacture or processing uses). Any other use is strictly prohibited without the prior written consent of VORTAB Company.

D

D

C

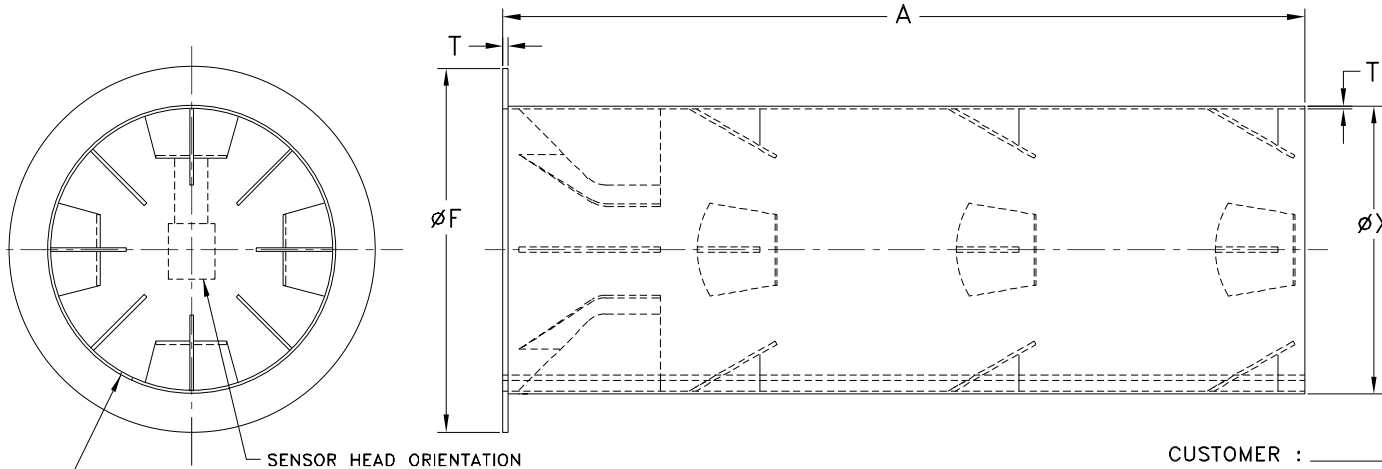
C

B

B

A

A



SENSOR HEAD ORIENTATION

SPLIT TUBE ON DIAMETERS THRU 4.50.

SPECIFICATIONS

CUSTOMER : _____
 PURCHASE ORDER NO : _____
 SHOP ORDER NO : _____
 WETTED SURFACE MATERIAL: _____
 DIAMETER (øX) : _____
 DIAMETER (øF) : _____
 THICKNESS (T) : _____
 LENGTH (A) : _____
 SERIAL NO.(S) : _____
 TAG NO.(S) : _____

INSTALLATION OUTLINE DRAWING

2. SEE INSTRUMENT MANUAL FOR ADDITIONAL INFORMATION AND INSTRUCTION.

1. THIS DRAWING IS A REFERENCE DOCUMENT ONLY.

NOTES: UNLESS OTHERWISE SPECIFIED

FCT® FLUID COMPONENTS INTL
 a limited liability company
 SAN MARCOS, CA 92069

TITLE INSERTION SLEEVE FLOW,
 CONDITIONER, ISFC, CAPTIVE
 INLET FLANGE

CAGE CODE 64818	DWG NO. 03MK004347	REV -
SCALE NONE		SHEET 1 OF 1

4

3

2

1